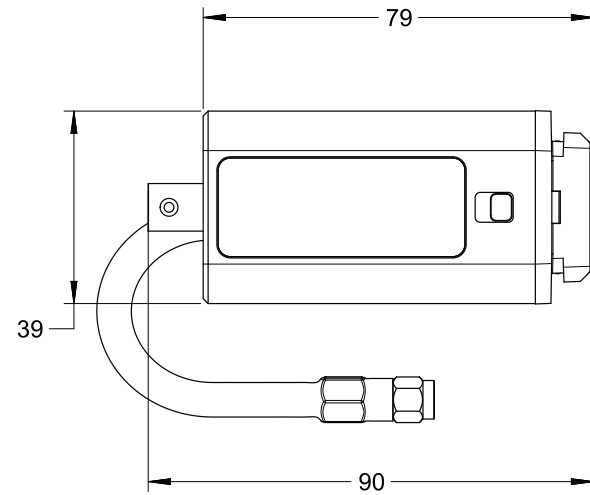


MX0113A Adapter Dimensions

(Dimensions are in units of mm)



Repair and Service

Service for the MX0113A Adapter is by replacement only.

To order a new MX0113A, contact your local Keysight Technologies Sales Office.

Return the failed adapter to your local Keysight service center.

If the adapter is still under warranty or is covered by a Keysight maintenance contract, it will be replaced under the terms of the warranty or contract.

For technical assistance, you can contact your local Keysight Technologies Call Center.

- In the Americas, call 1 (800) 829- 4444
- In other regions, visit <http://www.keysight.com/find/assist>

Cleaning the Probe

If the adapter requires cleaning:

1. Disconnect the adapter from the oscilloscope and probe.
2. Wipe it with a soft cloth dampened with a mild soap and water solution.
3. Make sure the adapter is completely dry before reconnecting it to the probe and oscilloscope.

CAUTION

Do not use too much liquid to clean the adapter. Water can enter the adapter, damaging sensitive electronic components.

© Keysight Technologies 2026
1900 Garden of the Gods Road
Colorado Springs, CO 80907

MX0113-92001, February 2026,
Printed in USA



MX0113-92001

Electrical and Environmental Characteristics

Characteristic	Value
Temperature	0 °C to +40 °C (operating) -40 °C to +70 °C (non-operating)
Altitude	Up to 3100 meters (operating) Up to 4600 meters (non-operating)
Humidity	95% RH at 40 °C, non-condensing (operating) 90% RH at 65 °C, non-condensing (non-operating)
Use	Indoor
Safety	Conformance to IEC61010-1:2010+AMD1:2016
Maximum Input Voltage	Refer to the specifications of the probe connected to the MX0113A adapter
Bandwidth	Supports Autoprobe I interface probes/accessories up to 13 GHz
Oscilloscopes	Oscilloscopes with AutoProbe III Interface
Probes	Probes with AutoProbe I Interface

Safety Symbols and Markings



This symbol indicates the Environmental Protection Use Period (EPUP) for the product's toxic substances for the China RoHS requirements.



The crossed out wheeled bin symbol indicates that separate collection for waste electric and electronic equipment (WEEE) is required, as obligated by the EU DIRECTIVE and other National legislation.

Refer to keysight.com/go/takeback to understand your Trade in options with Keysight in addition to product takeback instructions.



The product is marked with this symbol when it is necessary for the user to refer to the instructions in the documentation.

Safety Warnings and Cautions

CAUTION

When using the MX0113A, always work at a static-safe work station and wear a wrist-strap or heel-strap.

WARNING

If this product is not used as specified, the protection provided by the equipment could be impaired.

CAUTION

Care should be taken while handling the MX0113A adapter's RF cable. Avoid bending this cable backwards or kinking the cable to ensure measurement accuracy.

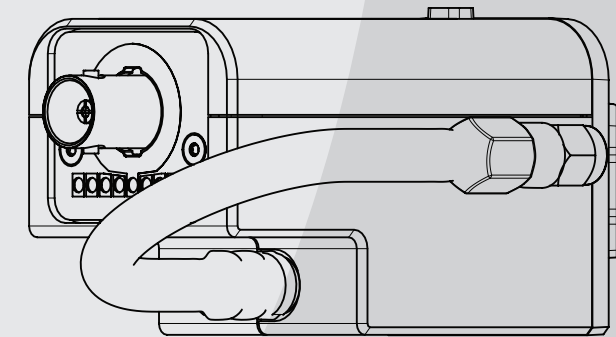
WARNING

This adapter is for use only on circuits that are NOT directly connected to mains. It is NOT intended for measurements on CAT II, CAT III, or CAT IV circuits.

MX0113A AutoProbe I to AutoProbe III Interface Adapters

Probes Documentation

Download the MX0113A Adapter user's guide from the product's page at <http://www.keysight.com/find/MX0113A>. Probes and adapters related documentation is also available in Keysight's Probe Resource Center (PRC) accessible from <https://www.keysight.com/find/PRC>.



Overview of the MX0113A Adapter

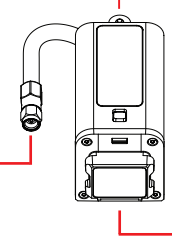
The MX0113A adapter allows you to connect a Keysight probe that has the AutoProbe I interface (Precision BNC interface) to a Keysight oscilloscope that has the AutoProbe III interface (1.0 mm, 1.85 mm or 2.92 mm connector interface). The usage of this adapter expands the probing choices available with the ultra-high performance AutoProbe III interface oscilloscopes by enabling you to use a wide variety of AutoProbe I Keysight probes with these oscilloscopes.

Main parts of the MX0113A Adapter

BNC (Input from AutoProbe I Interface Probe)

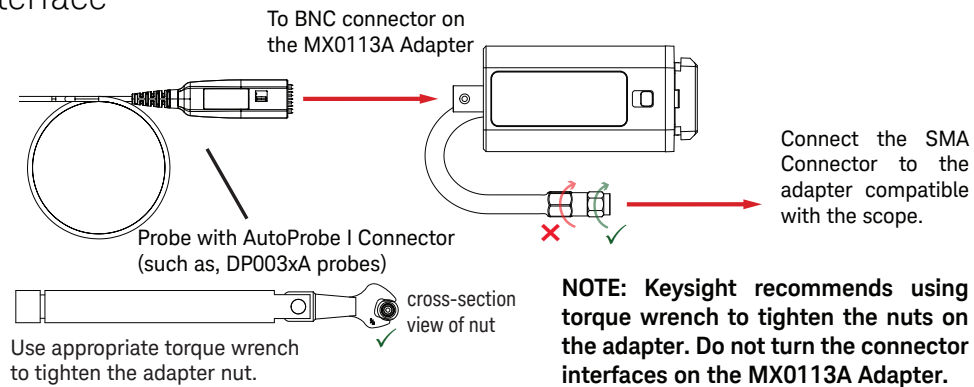
SMA Male RF Connector
(Output to AutoProbe III Interface Oscilloscope)

Power Connector
(For probe power, offset, and auto-configuration of probe type and attenuation settings)



Based on the oscilloscope model, use the appropriate F-F adapter(s) as displayed in the connection diagrams on pages 3 and 4 to connect MX0113A to the oscilloscope's input.

Connecting the MX0113A Adapter to a Probe with AutoProbe I interface

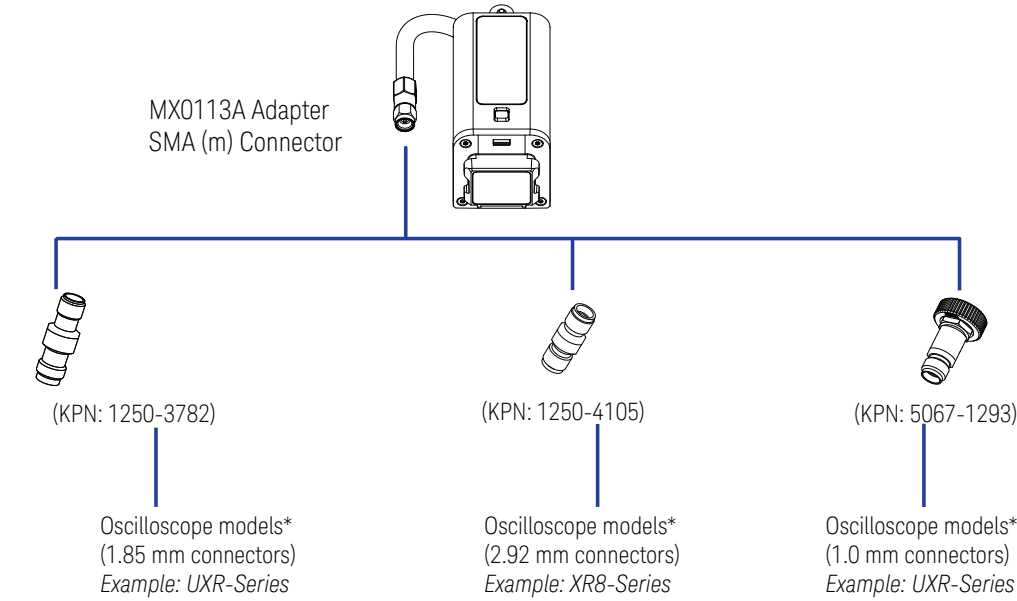


Torque specifications for adapters

Connector	Coupling Torque (N-cm/in-lb)	Torque Wrench Width	Torque Wrench Part Number
3.5 mm standard	90/8	5/16"	8710-1765
2.92 mm standard	90/8	5/16"	8710-1765
2.4 mm standard	90/8	5/16"	8710-1765
1.85 mm	90/8	5/16"	8710-1765
1.0 mm	45/4	6 mm	8710-2079
SMA	56/5	5/16"	8710-1582

Compatibility with Oscilloscopes & other Adapters

(See Page 2 for the torque specifications of the connector on the adapters below)

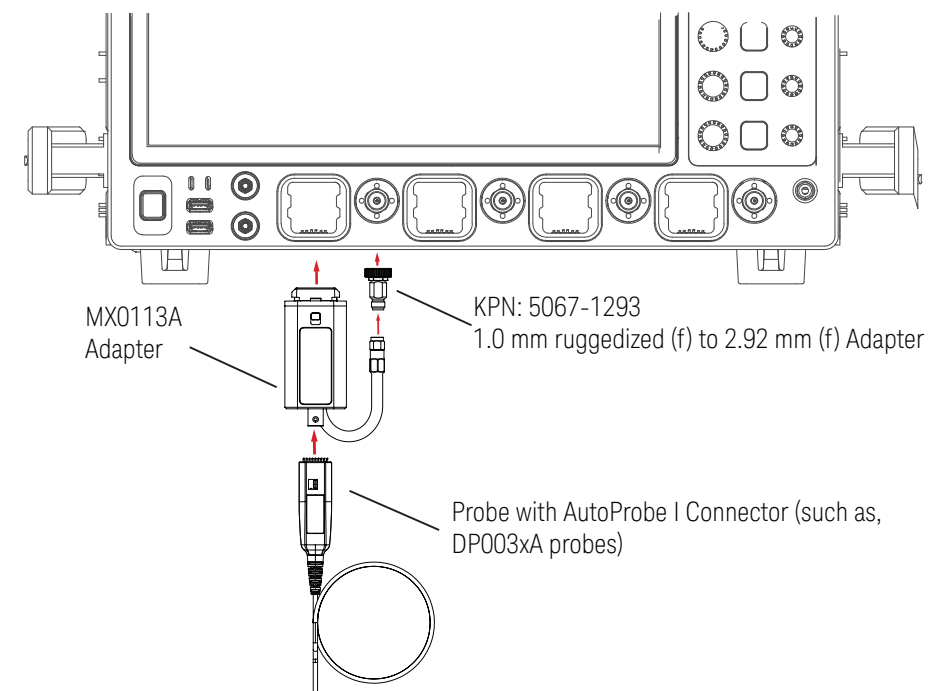


Note: The 2.92 mm connector is compatible with 3.5 mm / SMA connector, whereas the 2.4 mm connector is compatible with 1.85 mm connector.

*Refer to the Probe Resource Center for oscilloscope and probe compatibility

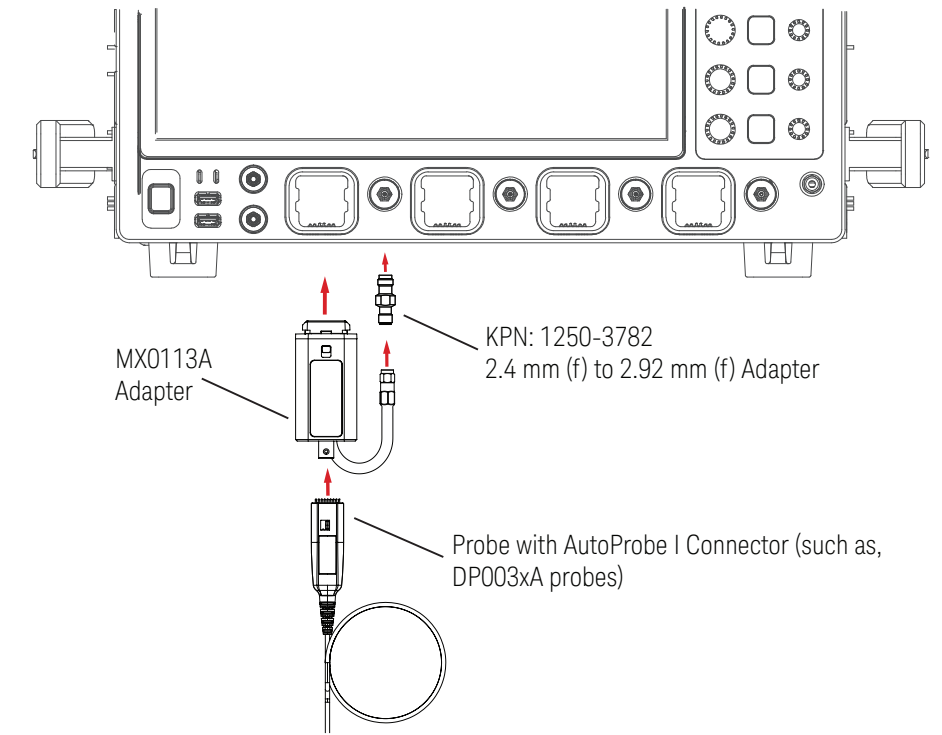
Using the MX0113A Adapter

Oscilloscope with 1 mm AutoProbe III Interface Connector



Using the MX0113A Adapter (contd.)

Oscilloscope with 1.85 mm AutoProbe III Interface Connector



Oscilloscope with 2.92 mm AutoProbe III Interface Connector

