

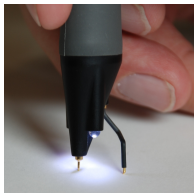
## Recommended Probe Configurations

*For best performance, use the following configurations (listed BWs are probe only).*

*\*See Manual For Detailed Information\**

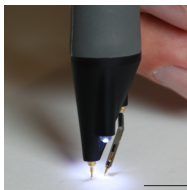
*They are presented in the recommended order, left to right, top to bottom.*

### Rigid Probe Tip with Offset Ground



**Bandwidth**  
 N2795A: 1 GHz  
 N2796A: 2 GHz

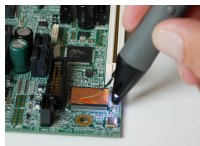
### Spring Tip with Ground Blade



**Bandwidth**  
 N2795A: 1 GHz  
 N2796A: 2 GHz

Both tip and ground are spring-loaded

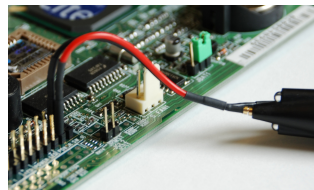
### Copper Pad with Flex Ground



**Bandwidth**  
 N2795A: 900 MHz  
 N2796A: 1.8 GHz

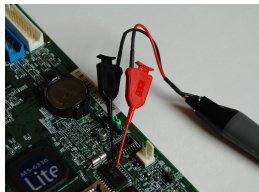
*\*Highly dependent on the number of ground connections between Cu pad and device under test*

### Y-Lead Adapter with 0.1" Headers



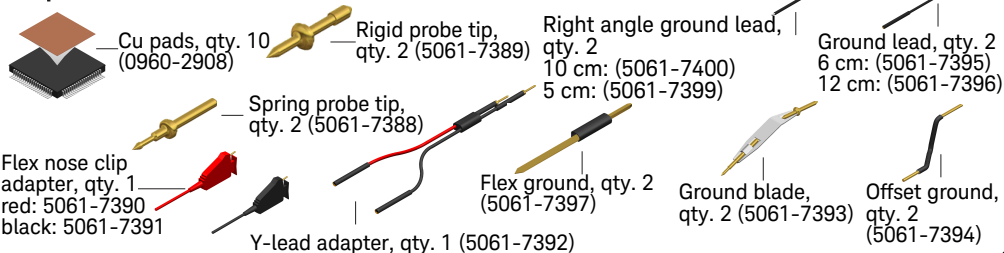
**Bandwidth**  
 N2795A: 750 MHz  
 N2796A: 1 GHz

## Flex Nose Clip Adapter with Y-Lead



**Bandwidth**  
 N2795A: 500 MHz  
 N2796A: 500 MHz

## Replacement Kit Parts (quantities below are not the quantities included with the probe)



Part Number  
N2795-97001

