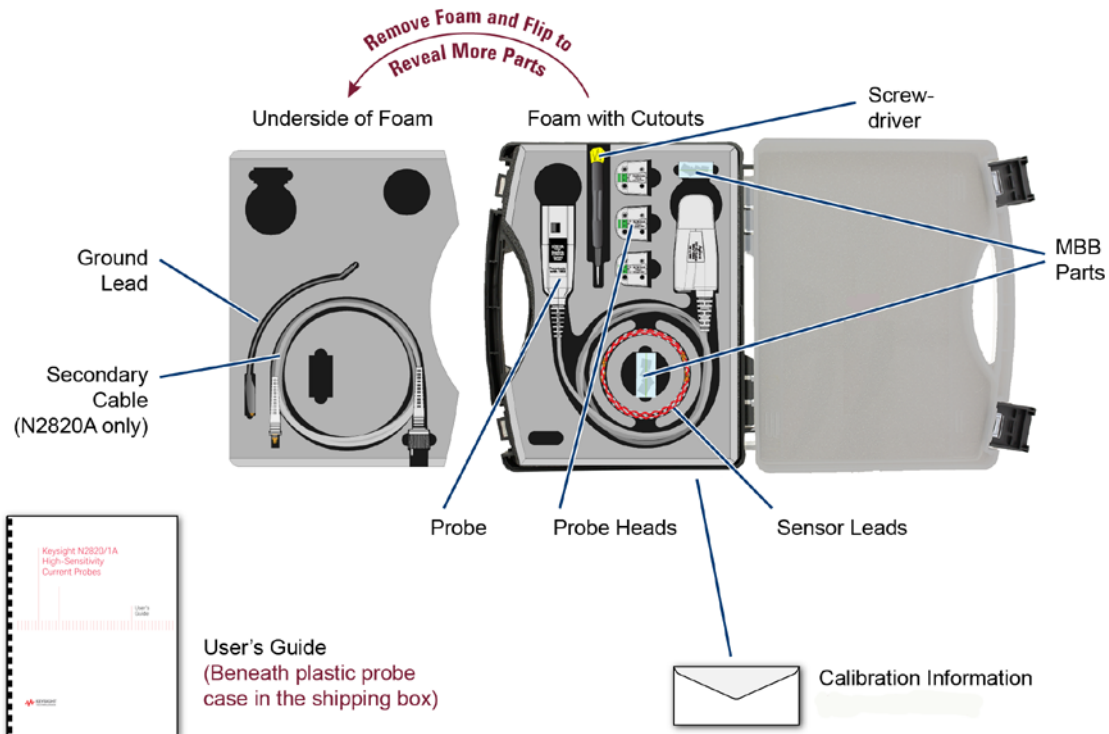


N2820A or N2821A Probe

The shipping box contains the following items:

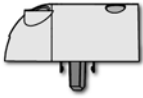
- ◆ N2820A or N2821A Probe
- ◆ User's Guide
- ◆ Accessories shown on the next page
- ◆ Functional Test Certificate
- ◆ Oscilloscope Probe RoHS Addendum
- ◆ Probe Case
- ◆ Box Contents (*this document*)

To locate the calibration information, ground lead, and secondary cable (*N2820A only*), open the plastic probe case and lift out the foam tray.

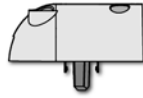


Probe Case with Contents Identified

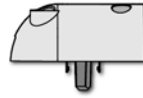
N2822A
20 mΩ R_{SENSE}



N2824A
100 mΩ R_{SENSE}



N2825A
User-Defined



Probe Heads (Qty. 1 each)



Sensor Leads
With Socket (Qty. 5)



Sensor Leads (Qty. 5)



MBB Receptacle (Qty. 5)



MBB Header (Qty. 5)



Ground Lead (Qty. 1)



Secondary Cable (Qty. 1)
(Supplied with and
attaches to N2820A
probes.)

Drawing Not To Scale



Screwdriver (Qty. 1)
(for calibrating the probe)

Supplied Accessories (*Documentation Not Shown*)

Printed in USA, June 2013
N2820-92001

