

N2830A-Series InfiniiMax III+ Probes

Locate the user's guide

Download the user's guide from the probe's product page at www.keysight.com. The user's guide is also available in Keysight's Probe Resource Center (PRC) which is available at www.keysight.com/find/PRC. The PRC is an application that runs on a PC, Mac, or iOS device.

Additional Accessories

- N5477A for connecting the N7000/1/2/3A probes to Infiniium 86100D DCA-X sampling oscilloscope or other RF instruments.
- N1022B for connecting the InfiniiMax III+ probing system to Infiniium 86100D DCA-X sampling oscilloscope or other RF instruments.
- N2787A 3D probe positioner for holding the browser or probe amplifier.
- Strain relief putty (N5439-65201).
- N5450B Extreme Temperature Extension Cable. See user's guide for more information.
- E2655C or N5443A PV Fixture. Required to calibrate, deskew, and verify the performance of the probe. Properly positions the probe for performance verification testing.

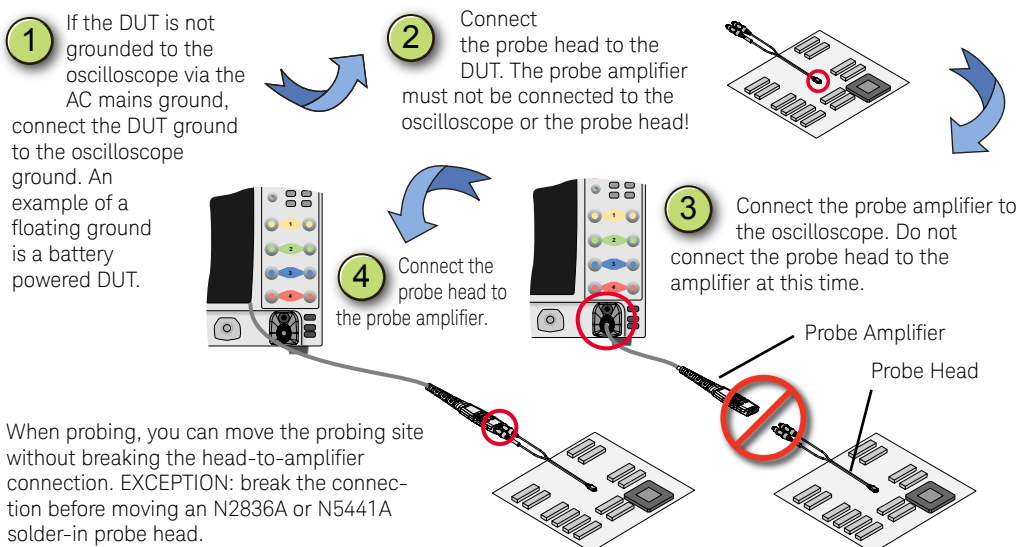
InfiniiMax III+ probe compatibility

Compatible scopes: 90000 X/Q series with N5442A adapter, 90000A series, S series, 86100C/D with N1022A/B adapter.

Not compatible: 9000 and InfiniiVision scopes, N2830/1/2A InfiniiMax III+ probes are not compatible with InfiniiMax I and II probe heads and vice versa.

CAUTION. Risk of damage due to electrostatic discharge (ESD)

This probe is a high-performance device that ESD can quickly and imperceptibly damage or destroy. Always work at a static-safe workstation and wear a wrist strap when handling probe components. Refer to the User's Guide. To connect the probe to the oscilloscope, follow these four steps. When disconnecting the probe amplifier from the scope, always disconnect the probe head from the amplifier first.

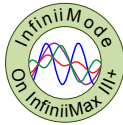
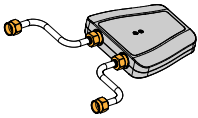


1. N5445A Differential Browser



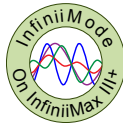
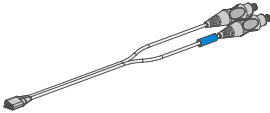
- BW up to 30 GHz
- Replacement tips, ground blades and ground screws available.
- Best handheld probe for differential and single-ended signals
- Spring-loaded tips and variable spacing (0.5 mm to 3.1 mm, use thumbwheel to adjust)
- Accessories: 4 replacement tips (N5476A), 4 replacement ground blades (N5445-68700), 4 replacement ground screws (N5445-68701)
- Using the N2787A 3D probe positioner with the N5445A browser probe head reduces the chance of browser tips breakage and ensures that the tips maintain solid contact.

4. N5444A 2.92 mm/3.5 mm SMA Head



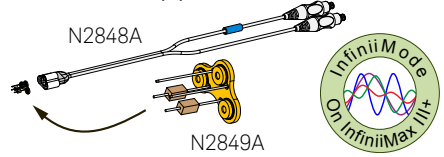
- BW up to 30 GHz
- Connect two 2.92 mm, 3.5 mm, SMA cables to make a differential measurement on a single oscilloscope channel.
- Accessory: N5448A 2.92 mm flexible cables (25 cm) to extend the cable length.

5. N2836A InfiniiMode Solder-In Probe Head



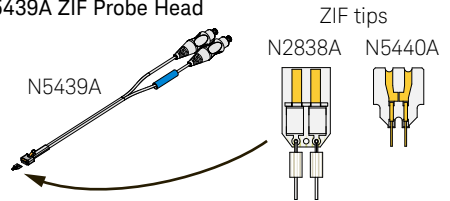
- InfiniiMode. Differential, common mode, single-ended measurements without changing connections.
- BW up to 26 GHz, variable span
- Economical, semi-permanent connection
- Replacement axial resistors: N2836-68701

2. N2848A QuickTip probe head



- InfiniiMode. Differential, common mode, single-ended measurements without changing connections.
- BW: 16 GHz Diff, 10 GHz CM, 10 GHz SE
- Easy, secure magnetic connection between head and tip.
- Extreme temperature environments.
- Accessory: 4 QuickTips (N2849A)

3. N5439A ZIF Probe Head



- N2838A: 25 GHz BW, normal sensitivity
- N5440A: 28 GHz BW, normal sensitivity
- N5447A: not compatible with InfiniiMax III+ amplifiers
- 5 PC Board ZIF tips (N2838A)
- 5 Ceramic ZIF tips (N5440A)
- Economical replaceable tip form factor
- Choice of 450Ω (normal sensitivity) or 200Ω ZIF tips (high sensitivity)
- Variable spacing
- N2838A replacement axial resistors: N2836-68701



6. N5441A Solder-In Probe Head



- BW up to 16 GHz, variable span
- Economical, semi-permanent connection
- Extra wire accessory: 7 mil (01169-81301), 5 mil (01169-21306).

Connecting the probe to an Infiniiium scope

To Connect

1. With the lever in relaxed in position ① push the probe onto the BNC.
2. The lever moves towards the R (release) ② and returns to  symbol.
3. Move the lever towards the  symbol until snug. ③



To Disconnect

Move and hold the lever at R (Release) and pull the probe from the BNC.

